

## Perfectly clamped grinding pins with powRgrip®

### PRECISE

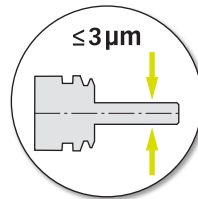
Highest runout accuracy and excellent vibration damping for best surfaces.

### VERSATILE

Various designs and collets for different grinding applications.

### powRgrip®

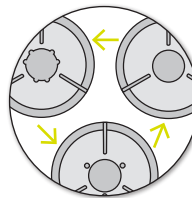
The tool clamping system of today and the future.



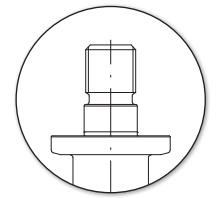
Total system runout  
≤ 3 μm at 3 x D



Excellent vibration  
damping



Coolant system changed  
within seconds



HJNZ interface  
(HJNZ spindles)

**Test powRgrip® free of charge!**

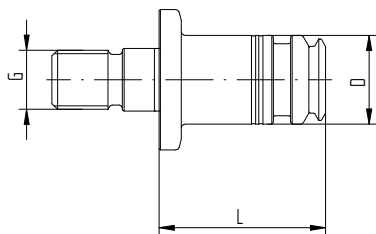
Get more information at [try.rego-fix.ch/toollife](https://try.rego-fix.ch/toollife)

# Stability, vibration damping and precision: New benchmark for internal grinding

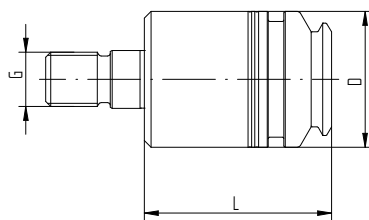
The advantages of powRgrip® in grinding applications have been proven many times in applications with HSK interfaces. Developed in close cooperation with grinding machine manufacturers, the HJNZ holders offer extensive advantages over the common ER and mandrel solutions.

The high concentricity favors dressing while the vibration damping provides significantly better surface finishes. The high rigidity allows increased cutting parameters and ensures more reliable dimensional accuracy. In addition, the various cooling options of the powRgrip® collets ensure ideal supply of cutting fluids.

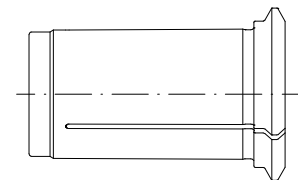
In combination with the newly developed, extra short PGST collets, a low overall length is also achieved. HJNZ holders are manufactured according to Fischer Spindle specifications.



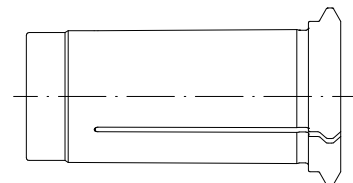
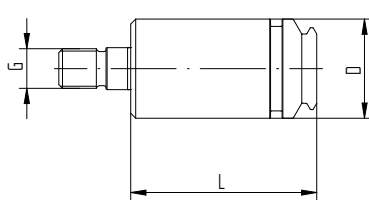
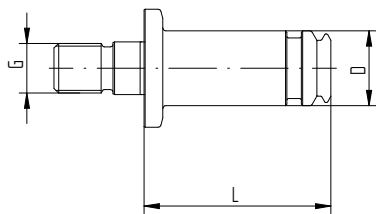
HJNZ/PGST



HJNZ/PG



PGST collet (short)



PG collet (standard)

Type	Part. No.	G	L	D
<b>HJNZ 28</b>				
HJNZ 28/PG 15 x 060	8267.28152	M16x1.5	60	24
HJNZ 28/PGST 15 x 045	8267.28151	M16x1.5	45	24
HJNZ 28/PG 25 x 075	8267.28253	M16x1.5	75	40
HJNZ 28/PGST 25 x 055	8267.28251	M16x1.5	55	40

Type	Part. No.	G	L	D
<b>HJNZ 21</b>				
HJNZ 21/PG 25 x 075	8267.21253	M22x1.5	75	40
HJNZ 21/PGST 25 x 055	8267.21251	M22x1.5	55	40

Type	Part. No.	Type	Part. No.
<b>Freewheel wrench heads</b>		<b>Grip bars</b>	
A-FLS Ø 24/MRM 16 (PG 15)	7855.16800	G-A	7655.99900
A-FLS Ø 40/MR 25 (PG 25)	7855.25000	TORCO-FIX II (40.0-200.0 Nm)	7150.20200