

posalux[®]
SWISS MADE 



• MONO

The innovative solution for PCB drilling and routing

MONO

THE BEST CHOICE FOR
PROTOTYPES AND SMALL
SERIES PRODUCTION



- New generation of one station machine with innovative and ergonomic design
- SINGLE version with one machining unit
- COMBI version with two different and alternating machining units
- DUAL version with two identical machining units, double the productivity
- Choice from an extensive range of drilling, routing or combination spindles
- Posalux CNC3000 – Powerful digital servo drives for rigid axis control
- Advanced concept of Z-axis unit – Increased stiffness, reduced mass
- New generation of multi-inserts pressure pad (IPF3) for drilling and routing
- Second measuring system for a perfect surface detection in controlled depth routing
- Standard and customized clamping systems
- CCD camera for registration
- Automation – Individual Loader (IL) up to 24 levels

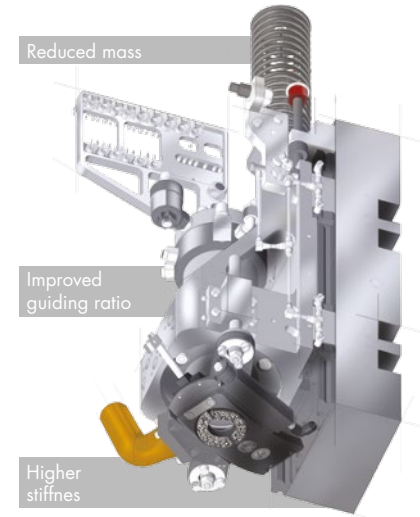
Accuracy, flexibility and reliability

Advanced concept of Z-axis

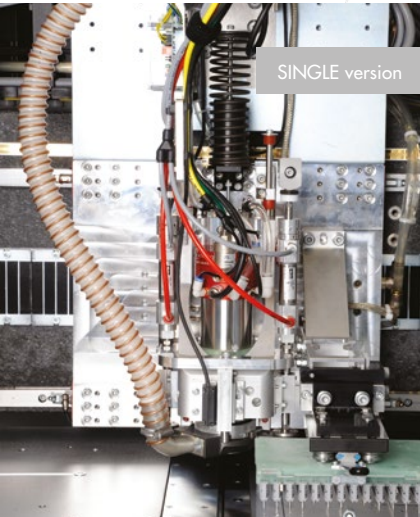
Reduced mass

Improved guiding ratio

Higher stiffness



SINGLE version



COMBI version



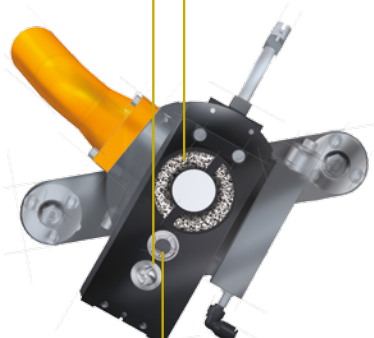
IPF3 Drilling and routing

Interchangeable Pressure Foot with 3 positions (IPF3):

- New concept designed for drilling and routing
- Routing brush – Large drilling insert – Small drilling insert
- Air gap function: air flow trough inserts to avoid any scratching of entry foil

Tool change and brush for routing

Small insert



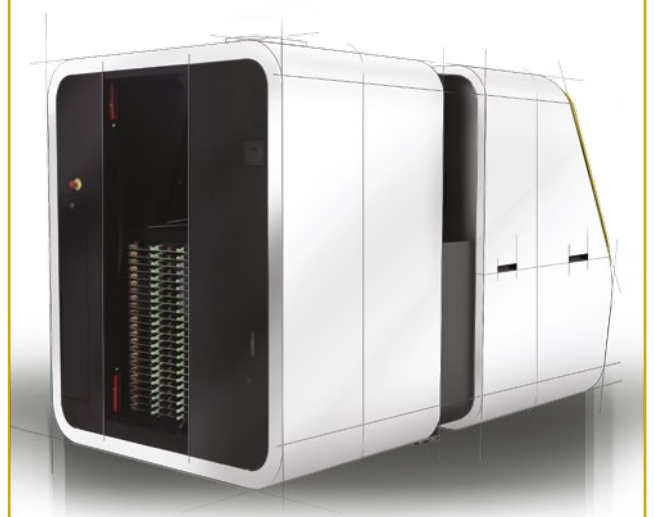
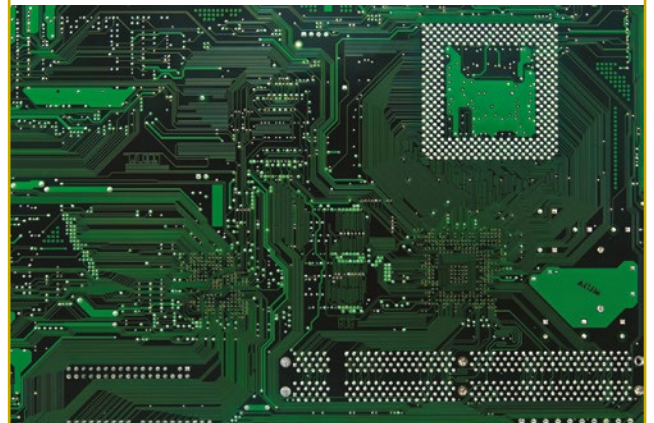
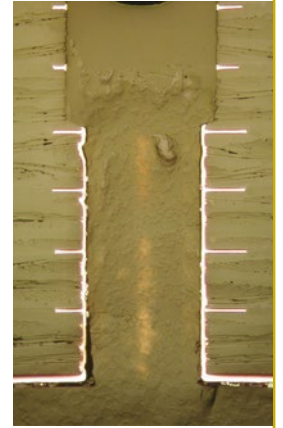
Large insert

Machine characteristics

- 1 station
- X, Y and Z axes with linear motor drives
- Workpiece format 635 x 724 mm (25.0" x 28.5")
- Tool management system with cassette, Posalux patented chain or Asian Tool Change (ATC)
- Software based on QNX with intuitive MMI
- Spindle speed range from 5'000 up to 350'000 rpm
- Axes acceleration up to 4 g
- Drilling accuracy: $\pm 15 \mu\text{m}$ ($\pm 0.6 \text{ mil}''$)
- Blind hole drilling by contact drill:
 - $< \pm 10 \mu\text{m}$ ($< \pm 0.4 \text{ mil}''$)
- Weight: approx. 4'500 kg

Applications

- PCB drilling and routing
- All controlled depth routing processes
- Machining to printed targets (CCD camera)
- IMS machining
- Machining of non-ferrous materials like aluminum, brass, bronze, polymers, etc.
- Drilling and routing of test fixtures
- Medical industry
- Aerospace industry



Individual loader (IL) – New concept up to 24 levels
Also available with Down Time Eliminator (DTE) – 2 levels

Custom solutions and support

Automation
Productivity and profitability



Release 2001

ULTRASPEED

High tech micro-drilling and routing

Founded in 1943, Posalux is a leading manufacturer of micro-technology machines intended for mass production. From our headquarters in Biel, Switzerland, we engineer and produce world-renowned system solutions.

Our clients are distinguished companies leading the automotive, electronic, watch, and medical industries. Thanks to our global network of Posalux branches and agents, we are able to provide reliable services and support to our customers worldwide.

HQ Switzerland

Posalux SA
18, F. Oppliger
P.O. Box 6075
CH-2500 Biel/Bienne 6
+41 32 344 75 00

Germany

Posalux GmbH
Friedrichstr. 104
D-63263 Neu – Isenburg
+ 49 6102 8167556

Korea

Posalux KOREA CO LTD
Room 503, Twin Tower B-Dong
703-3 Gojan-Dong
+82 31 319 5860

Taiwan

Posalux
1F, Hung Pei Road No. 71
Chung-Li
TW-Taoyuan
+886 491 57 72 / 3



contact@posalux.com | www.posalux.com